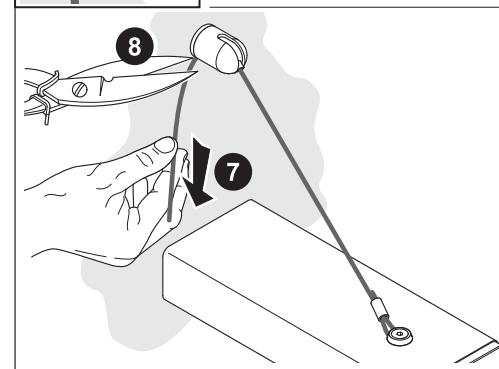
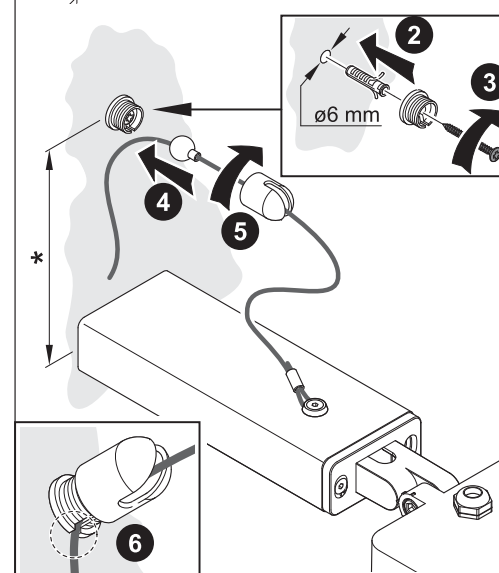
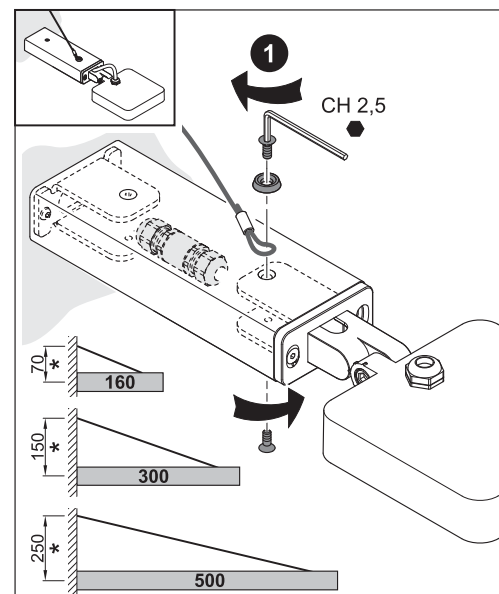
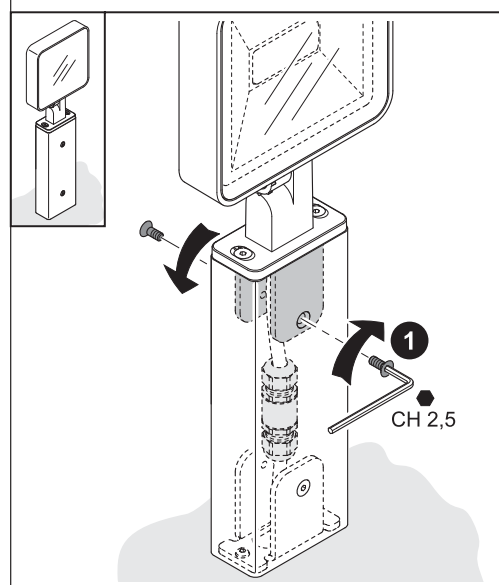
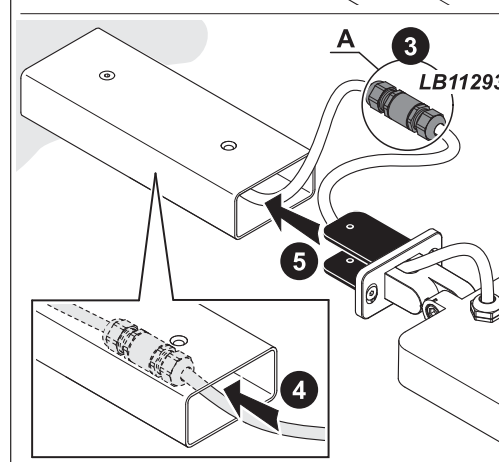
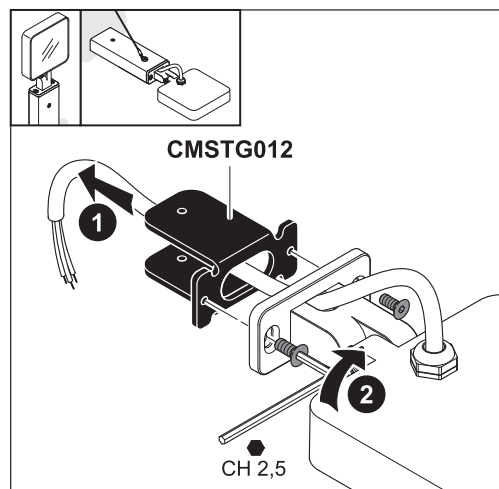
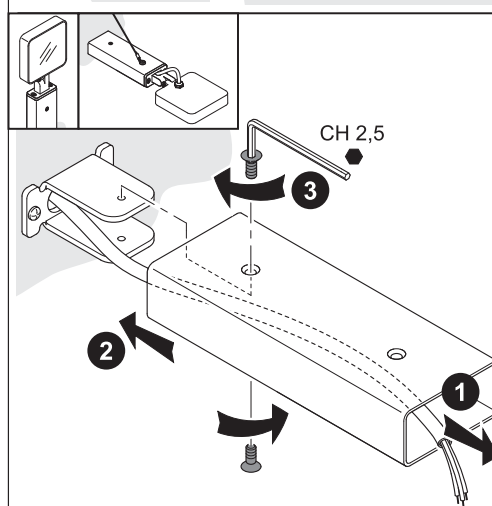
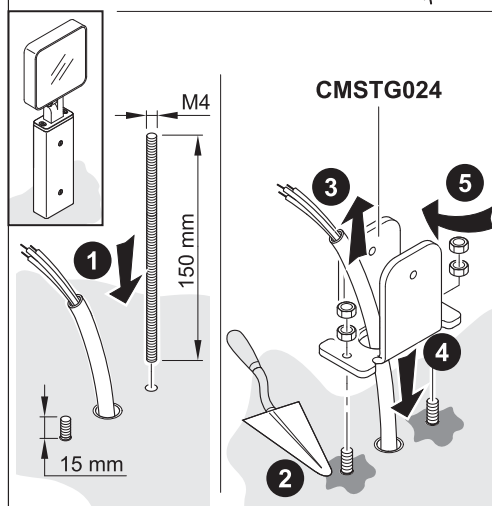
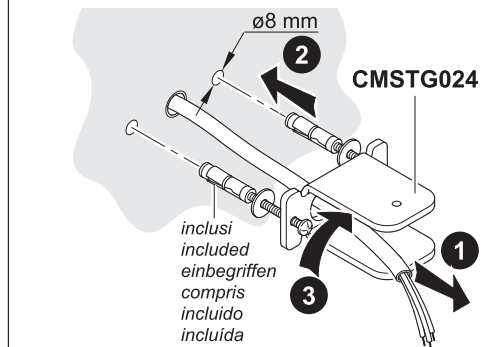


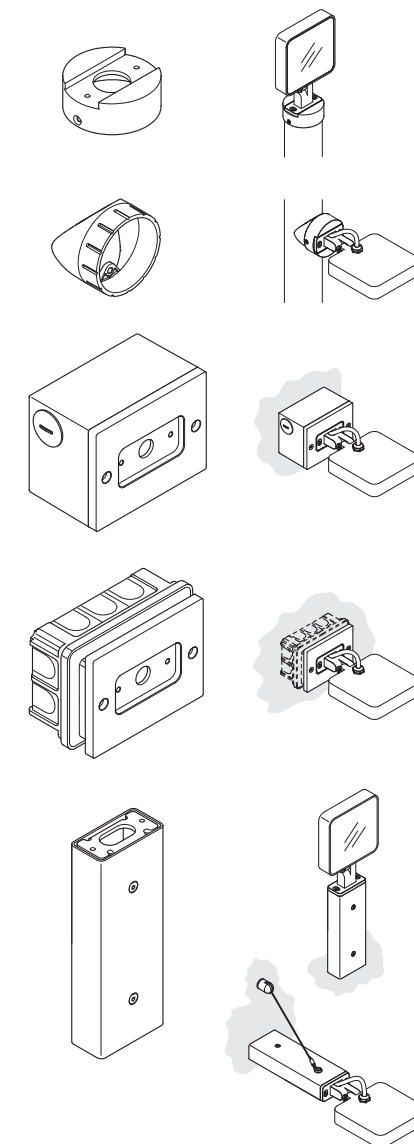
Braccetto Tag 110/210
Bracket Tag 110/210
Winkelträger Tag 110/210
Bras Tag 110/210
Soporte Tag 110/210
Suporte Tag 110/210



LOMBARDO

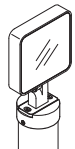


Accessories TAG 110/210

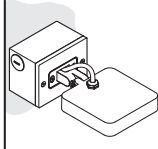
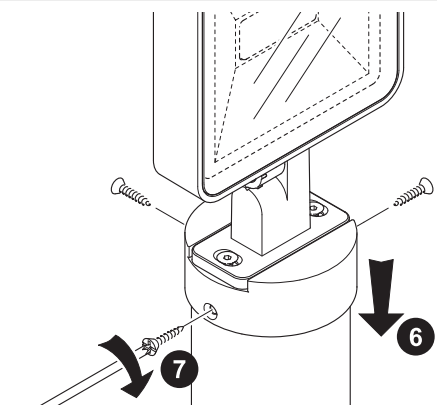
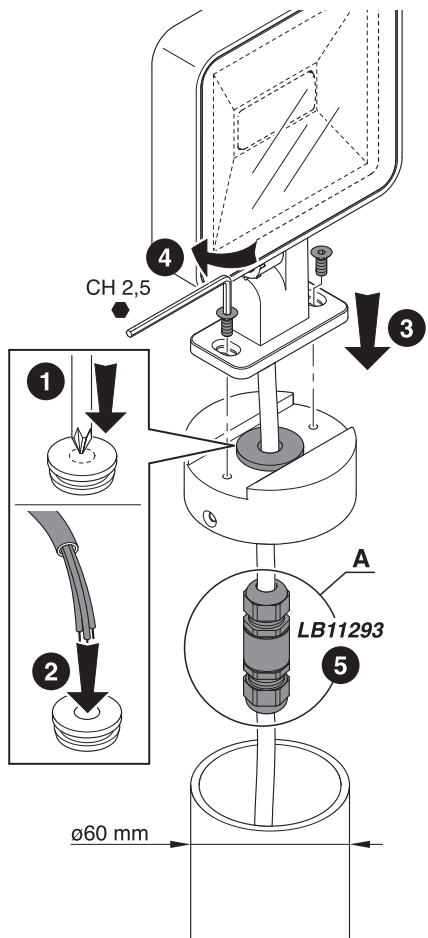


LOMBARDO S.r.l.

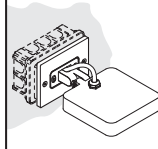
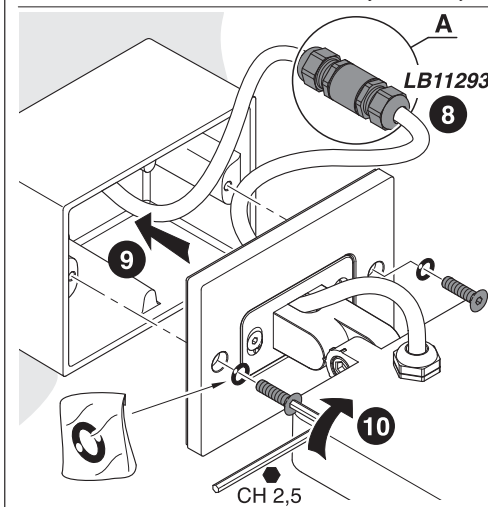
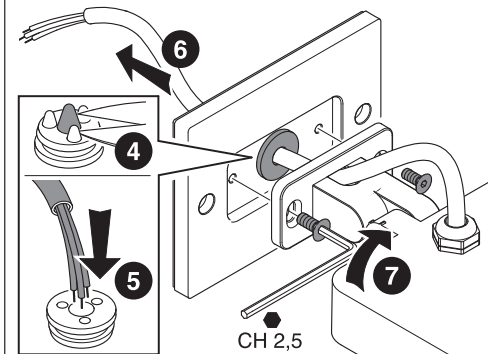
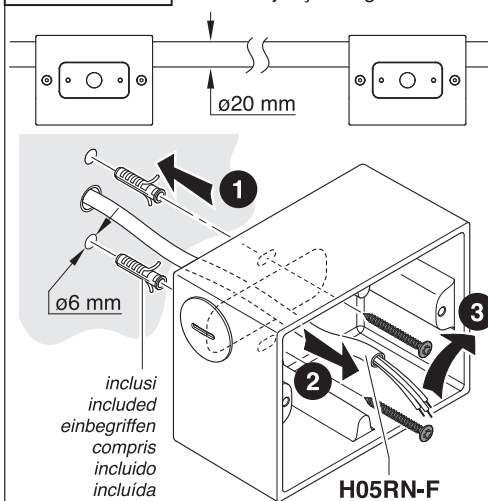
Via Pizzigoni, 3 - 24060 VILLONGO (Bergamo) Italia
Tel. +39 035 939411 - Fax +39 035 939496
www.lombardo.it e-mail: info@lombardo.it



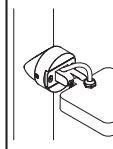
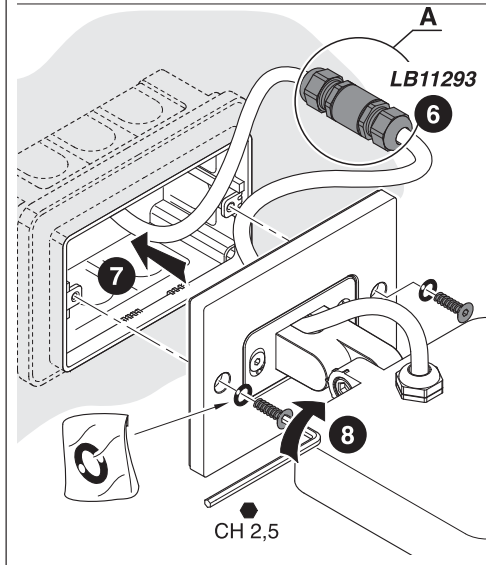
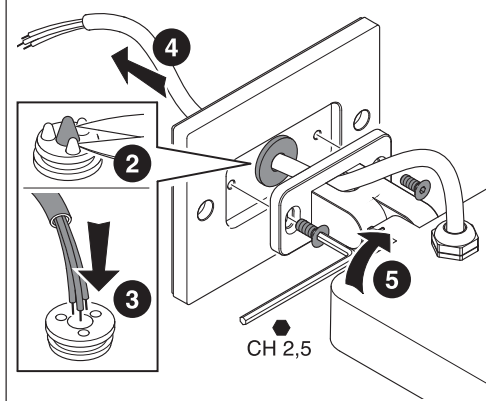
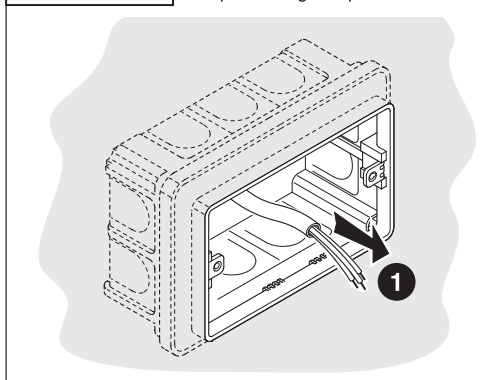
Adattatore Tag 110/210 per palo Ø60
Adapter Tag 110/210 for post Ø60
Adapter Tag 110/210 für Pfosten Ø 60
Adaptateur Tag 110/210 pour poteau Ø60
Adaptador Tag 110/210 para palo Ø60
Adaptador Tag 110/210 para pólo Ø60



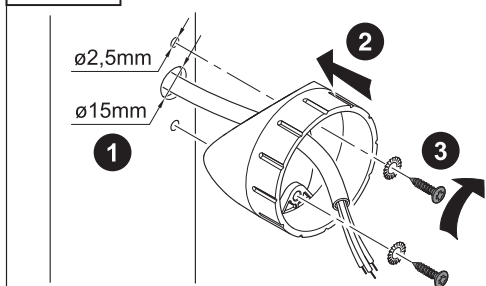
Box di derivazione Tag 110/210
Electrical junction Tag 110/210
Verteilerbox Tag 110/210
Box de dérivation Tag 110/210
Caja de derivación Tag 110/210
Caixa de junção Tag 110/210



Adattatore Tag 110 per scatola 503
Adapter Tag 110 for box 503
Adapter Tag 110 für Einbaugehäuse 503
Adaptateur Tag 110 pour boîte 503
Adaptador Tag 110 para caja 503
Adaptador Tag 110 para caixa 503

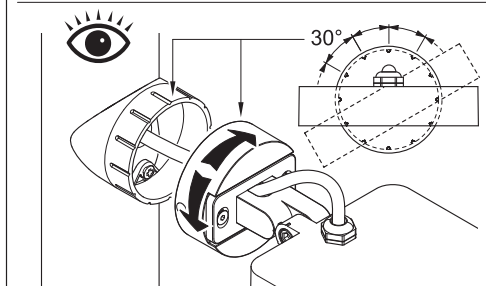


Adattatore Laterale Tag 110/210 per palo Ø60
Side adapter Tag 110/210 for post Ø60
Seitenadapter Tag 110/210 für Pfosten Ø 60
Adaptateur latéral Tag 110/210 pour poteau Ø60
Adaptador lateral Tag 110/210 para palo Ø60
Adaptador lateral Tag 110/210 para pólo Ø60



Ultimare il montaggio seguendo le operazioni descritte in "Adattatore Tag 110/210 per palo Ø60"
Complete the installation following the instructions provided in "Adapter Tag 110/210 for post Ø60"

Die Montage gemäß der bei den "Adapter Tag 110/210 für Pfosten Ø60" beschriebenen Arbeitsschritte abschließen
Finir le montage en suivant les opérations décrites dans "Adaptateur Tag 110/210 pour poteau Ø60"
Ultimar el montaje siguiendo las operaciones descritas en "Adaptador Tag 110/210 para palo Ø60"
Terminar a montagem seguindo as operações descritas em Adaptador Tag 110/210 para pólo Ø60"



A: Apparecchio sprovvisto di dispositivo di connessione all'alimentazione. Gli apparecchi sono forniti completi di uno spezzone di cavo H05RN-F già collegato e collaudato a tenuta. Per un rapido e sicuro collegamento alla linea elettrica utilizzare un sistema che garantisca il grado IP66.

A: Appliance without power connection device. The fixtures are complete with a piece of H05RN-F cable which is pre-connected and sealed. For a rapid and safe connection to the electrical line, use a system that guarantees an IP66 protection rating.

A: Gerät ohne Verbindungselement zum Anschluss an die Stromversorgung. Die Geräte sind mit einem Stück H05RN-F Kabel ausgestattet, der schon verbunden und getestet ist. Für eine schnelle und sichere Verbindung mit der elektrischen Leitung ein System, das den Schutzgrad IP66 garantiert.

A: Appareil dépourvu de tout dispositif de connexion au secteur. Les appareils sont équipés d'un tronçon de câble H05RN-F déjà connecté et étanche. Pour un raccordement rapide et sécurisé à la ligne électrique, utiliser un système qui garantit le degré IP66.

A: Aparato desprovisto de dispositivo de conexión a la red eléctrica. Los aparatos se entregan con un trozo de cable H05RN-F ya conectado y comprobada su estanqueidad. Para una conexión a la red eléctrica rápida y segura utilice un sistema que garantice el grado IP66.

A: Aparelho sem dispositivo de ligação à alimentação. Os aparelhos são fornecidos com segmento de cabo H05RN-F já conectado e testado em capacidade. Para a ligação rápida e segura à linha elétrica, utilize um sistema que garanta o grau IP66 de proteção.