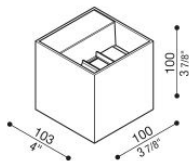


Dodo 100

LL14303Z3

Lombardo.



Informazioni tecniche:

| | |
|-----------------------------|---------------------------|
| Installazione: | Parete |
| Materiale Corpo: | Alluminio |
| Finitura: | Gold - Dark Grey RAL 7021 |
| Trattamento: | Bordo Mare |
| Tipo di diffusore: | Polycarbonato |
| Tipo lampada: | LED |
| Classe energetica: | E |
| Temperatura colore: | 3000K |
| CRI: | >80 |
| LB Factor: | L80B20 - 50.000h |
| Rischio fotobiologico: | RG0 |
| Potenza assorbita Watt: | 8 |
| Lumen: | 1180 |
| Real Lumen: | 350 |
| Alimentazione: | ☑️ integrata |
| LED: | 220-240 V |
| Interruttore magnetotermico | 45-56-66-82 |
| B10 - C10 - B16 - C16 | |
| Classe di isolamento: | ⊕ CL.I |
| Grado di protezione: | IP 54 |
| Resistenza alla rottura: | IK 10 20J xx9 |
| Marchi di Conformità: | CE UK |

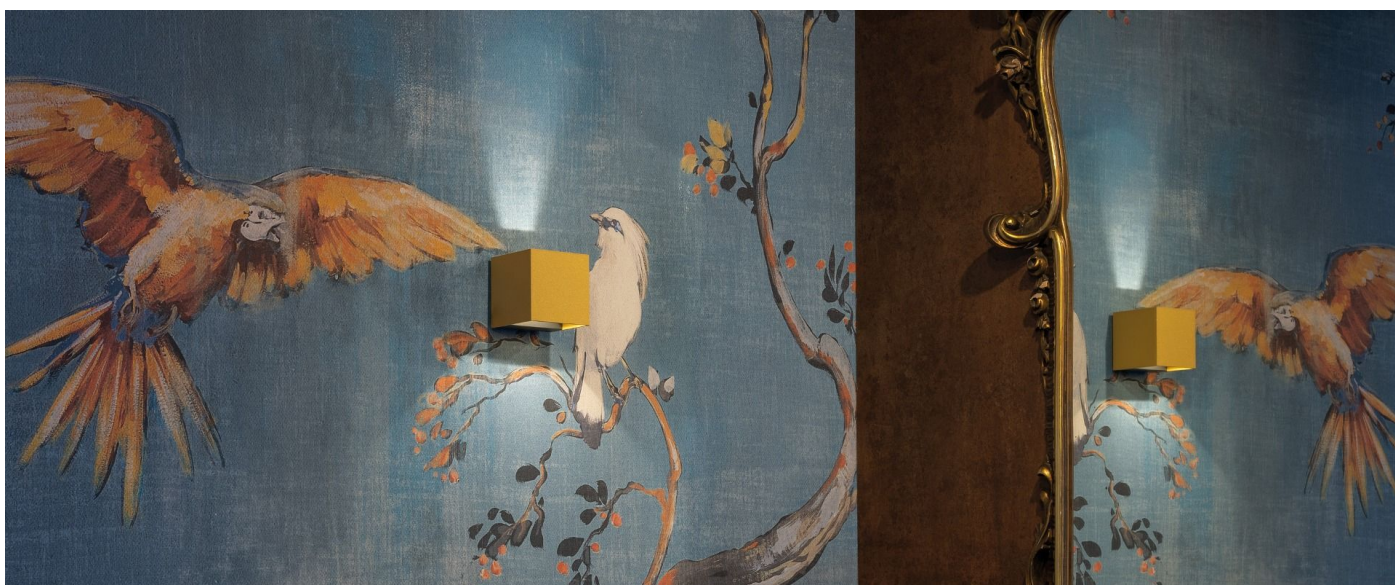
Fasci disponibili: 30°, 45°, 60°, 75°, 90°, regolabili tramite alette.



Dodo 100

Lombardo.

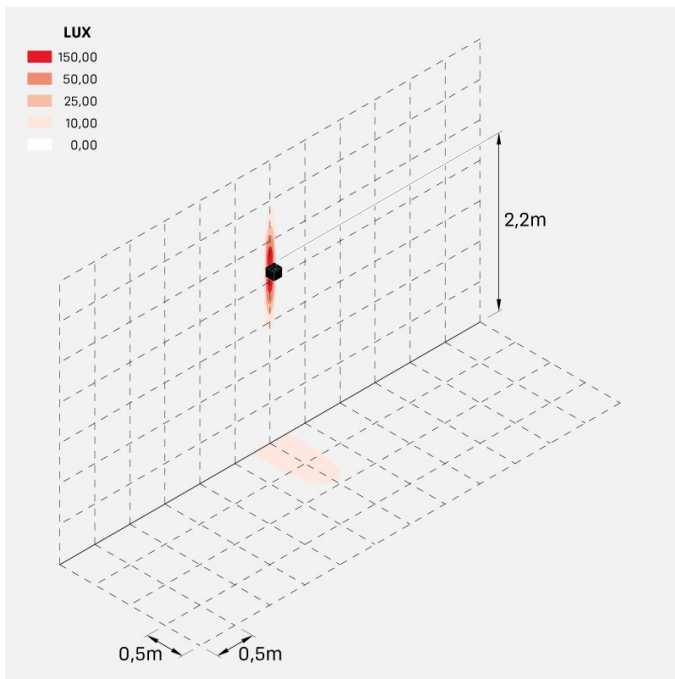
LL14303Z3



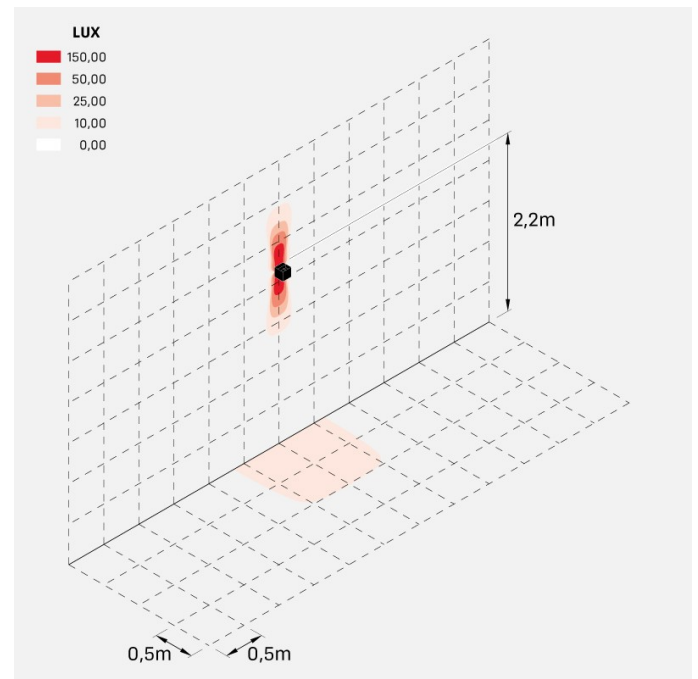
Immagini di montaggio:



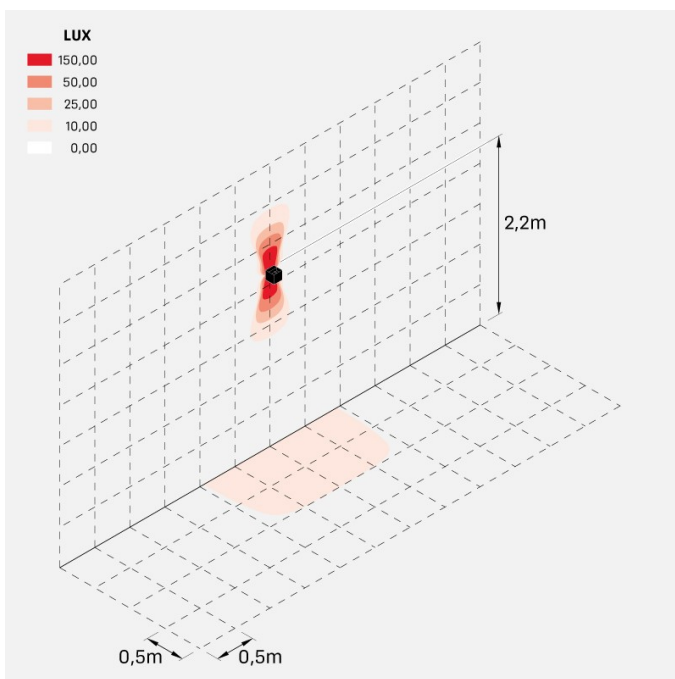
Simulazioni illuminotecniche:



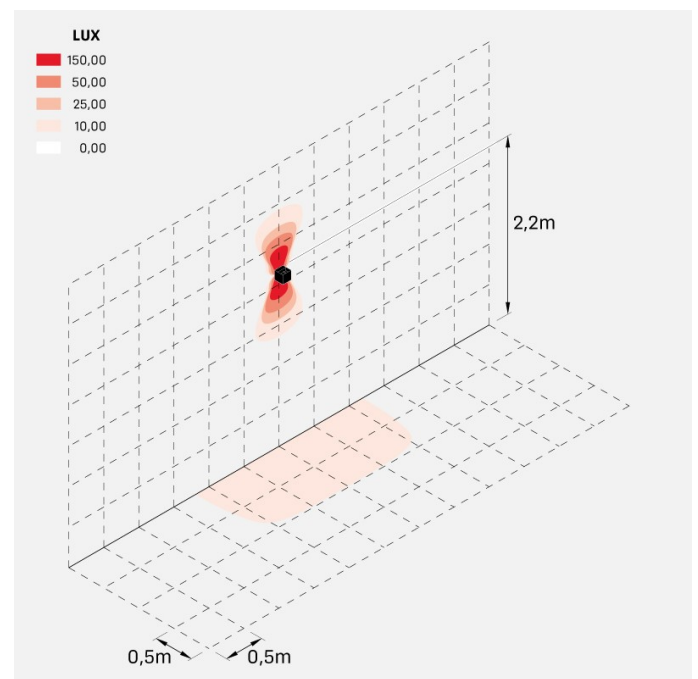
dodo_100_30



dodo_100_45

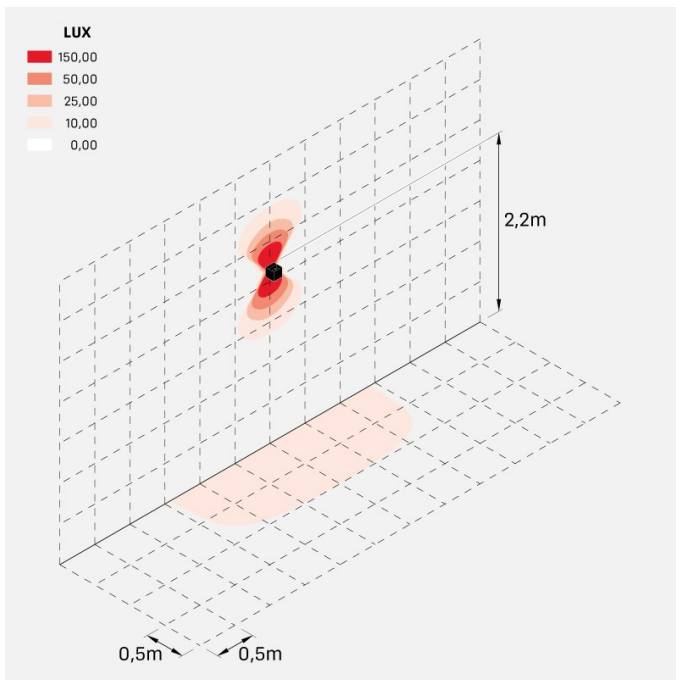


dodo_100_60



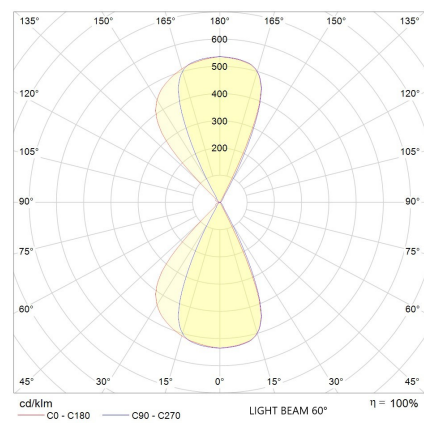
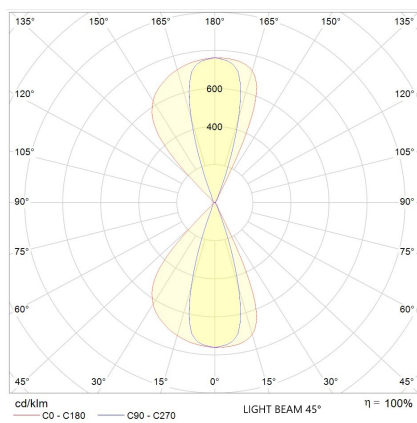
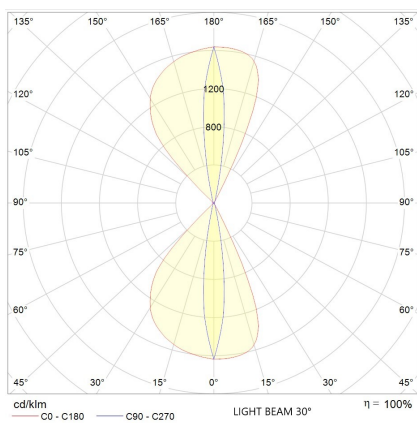
dodo_100_75

LL14303Z3



dodo_100_90

Curva fotometrica:



Dodo 100

LL14303Z3

Lombardo.

