

### Informazioni tecniche:

Installazione:	Parete
Materiale Corpo:	Alluminio
Finitura:	Light Grey RAL 7044
Trattamento:	Bordo Mare
Tipo di diffusore:	Polycarbonato
Tipo lampada:	LED
Classe energetica:	E
Temperatura colore:	2700K
CRI:	>80
LB Factor:	L80B20 - 50.000h
Rischio fotobiologico:	RG0
Potenza assorbita Watt:	8
Lumen:	1180
Real Lumen:	350
Alimentazione:	☑ integrata
LED:	220-240 V
Interruttore magnetotermico	45-56-66-82
B10 - C10 - B16 - C16	
Classe di isolamento:	⊕ CL.I
Grado di protezione:	<b>IP 54</b>
Resistenza alla rottura:	<b>IK 10 20J xx9</b>
Marchi di Conformità:	CE UK

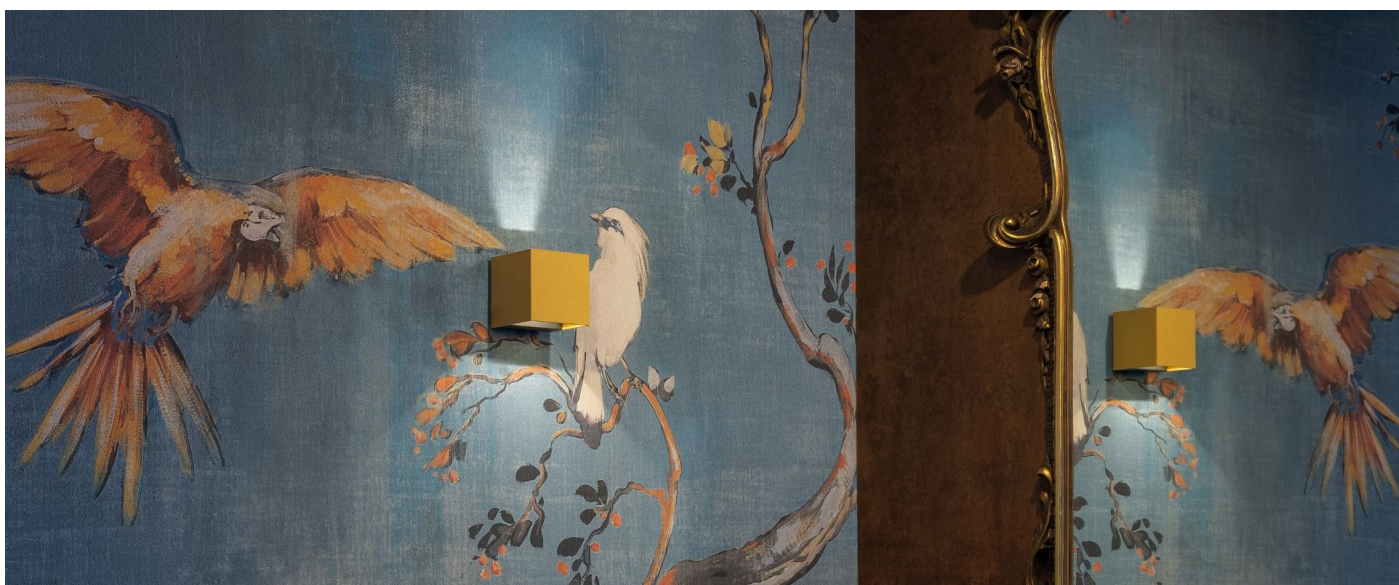
Fasci disponibili: 30°, 45°, 60°, 75°, 90°, regolabili tramite alette.



**Dodo 100**

LL14303L2

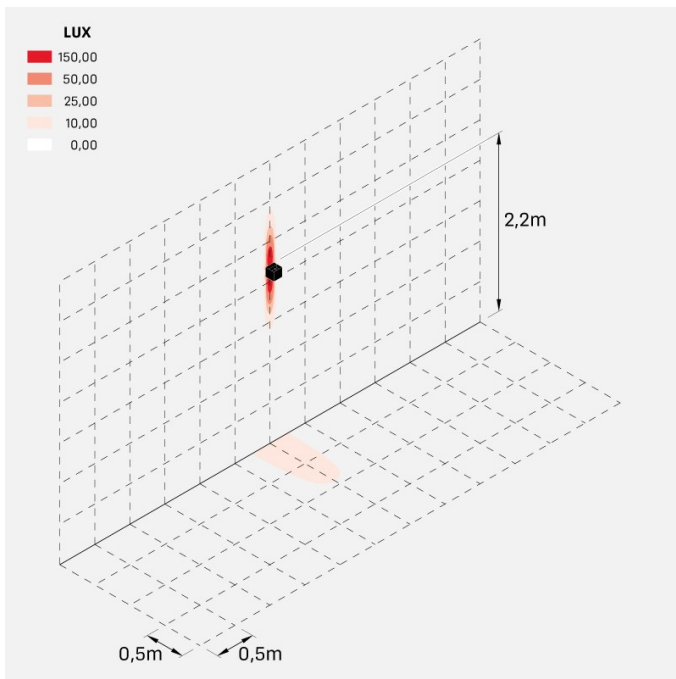
**Lombardo.**



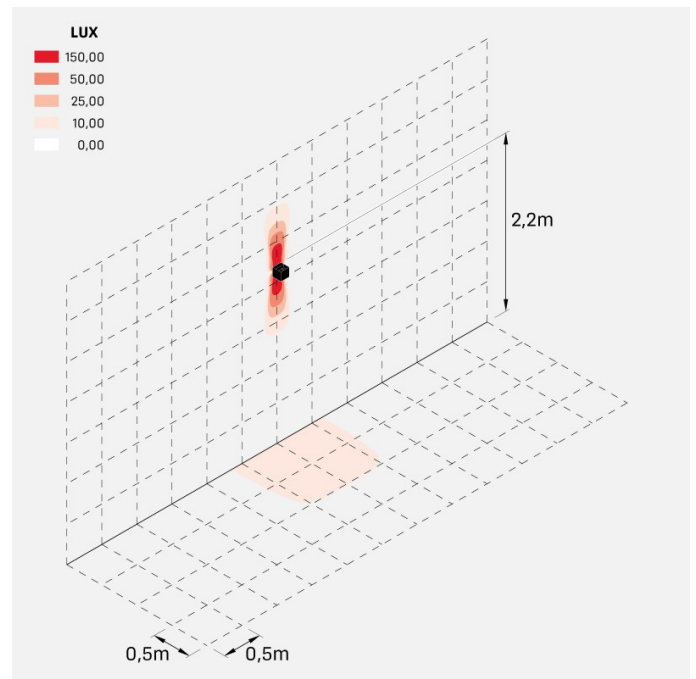
**Immagini di montaggio:**



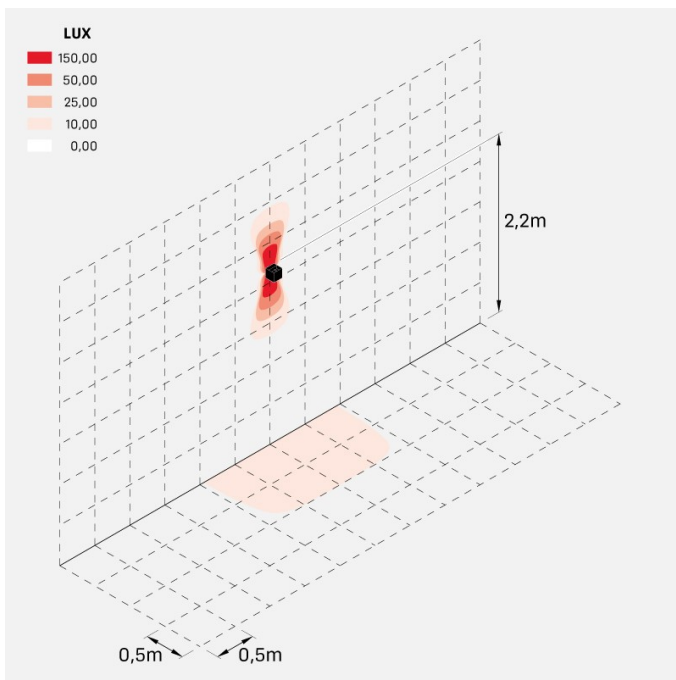
### Simulazioni illuminotecniche:



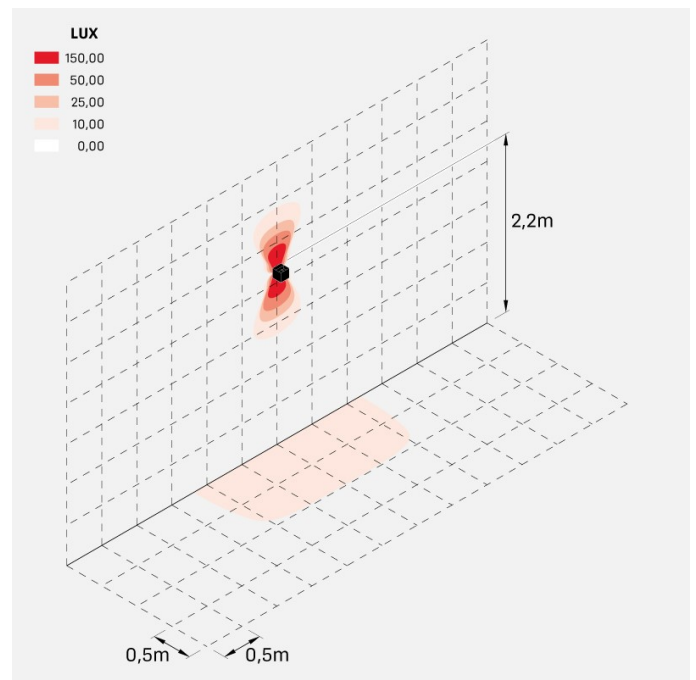
dodo\_100\_30



dodo\_100\_45

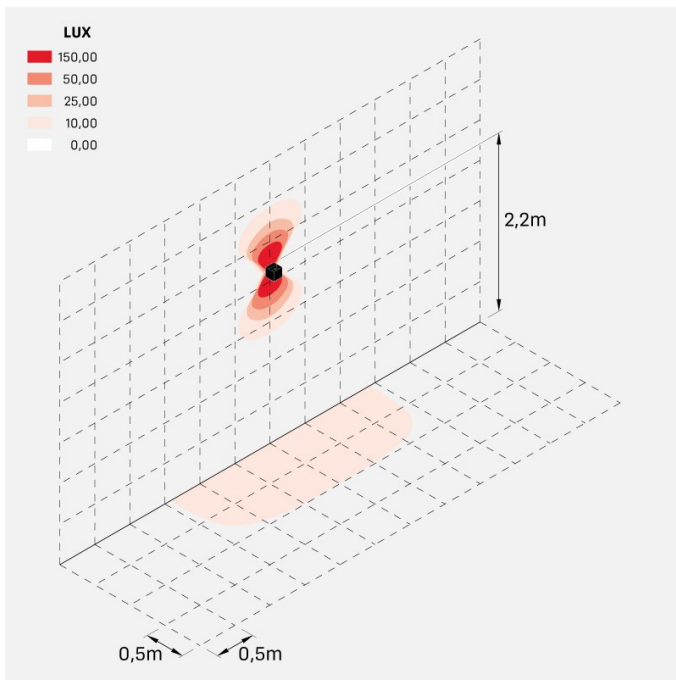


dodo\_100\_60



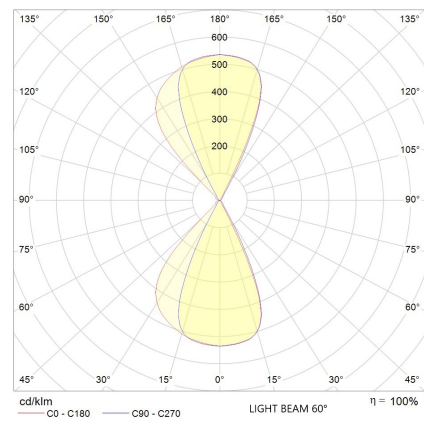
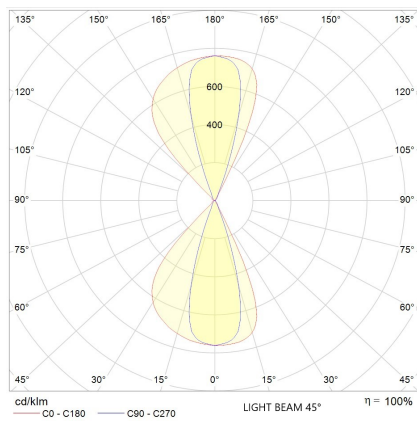
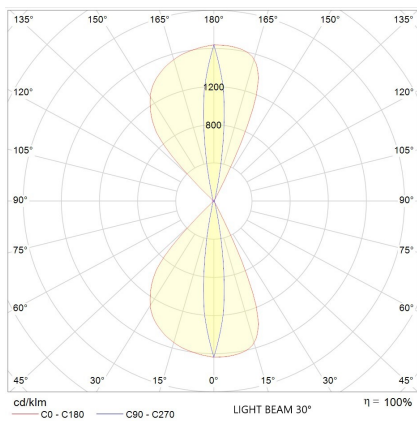
dodo\_100\_75

## LL14303L2



dodo\_100\_90

### Curva fotometrica:



# Dodo 100

## LL14303L2

# Lombardo.

