

LOMBARDO



Si raccomanda una superficie di cemento o similare, non deformabile, per evitare possibili oscillazioni del palo. H max palo 1500 mm.

We recommend using a cement surface or similar one that is non-deformable to avoid any oscillations of the post. Max post H 1500 mm.

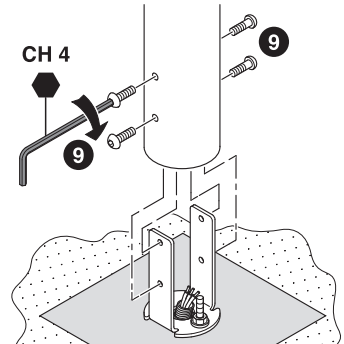
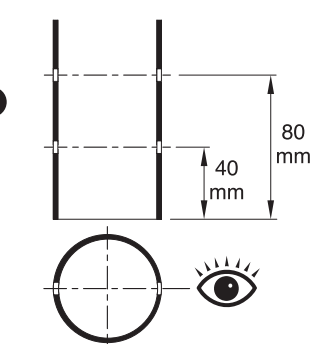
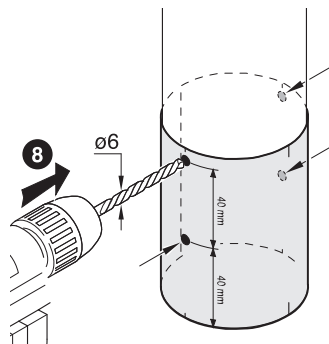
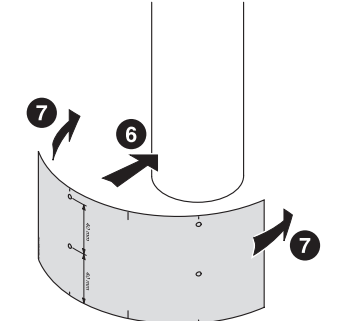
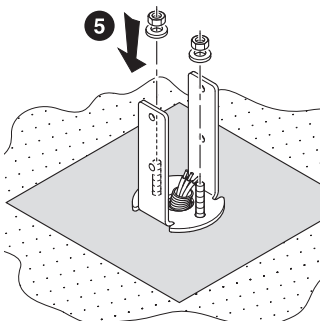
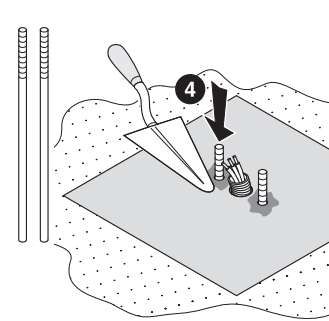
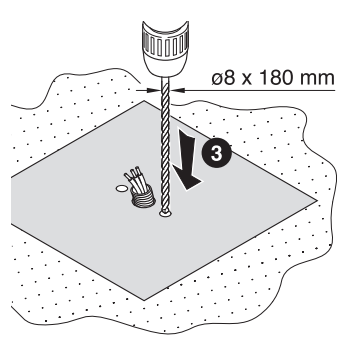
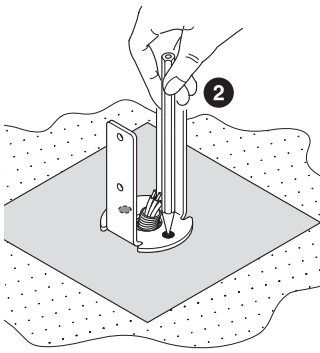
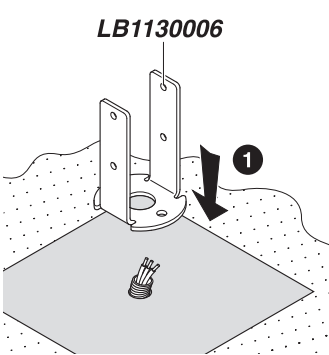
Il est conseillé que la surface soit réalisée en béton ou avec un matériau similaire, indéformable, pour éviter toute oscillation du poteau. Hauteur max. du poteau : 1 500 mm.

Es wird eine Beton- oder ähnliche Oberfläche empfohlen, die nicht verformbar ist, um etwaige Schwingungen des Pfahls zu vermeiden. Max. Höhe des Pfahls 1500 mm.

Se recomienda una superficie de cemento o similar, no deformable, para evitar posibles oscilaciones del palo. Altura máx. del palo 1500 mm.

Recomenda-se uma superfície de cimento ou similar, não deformável, para evitar possíveis oscilações do poste. H máx. do poste 1500 mm.

LB1130006



LOMBARDO S.r.l.

Via Pizzigoni, 3 - 24060 VILLONGO (Bergamo) Italia

Tel. +39 035 939411 - Fax +39 035 939496

www.lombardo.it e-mail: info@lombardo.it

