

Technical information:

Installation:	Ground, Post Ø60
Material:	Aluminium
Finish:	Corten
Treatment:	Sea Treatment
Diffuser type:	PMMA
Lamp type:	LED
Energy performance class:	F
Colour temperature:	3000K
CRI:	>80
LB Factor:	L80B20 - 50.000h
Photobiological risk:	RG0
Power consumption (Watt):	14
Lumen:	1920
Real Lumen:	630
Power supply:	☑ integrated
LED:	220-240 V
Circuit breaker	45-75-64-106
B10 - C10 - B16 - C16	
Insulation class:	⊕ CL.I
Power cable:	1 m H05RN-F
Type of protection:	IP 66
Resistance to breakage:	IK 10 20J xx9
Standards and Marks of Conformity:	CE UK ENEC

Light beam 360°.

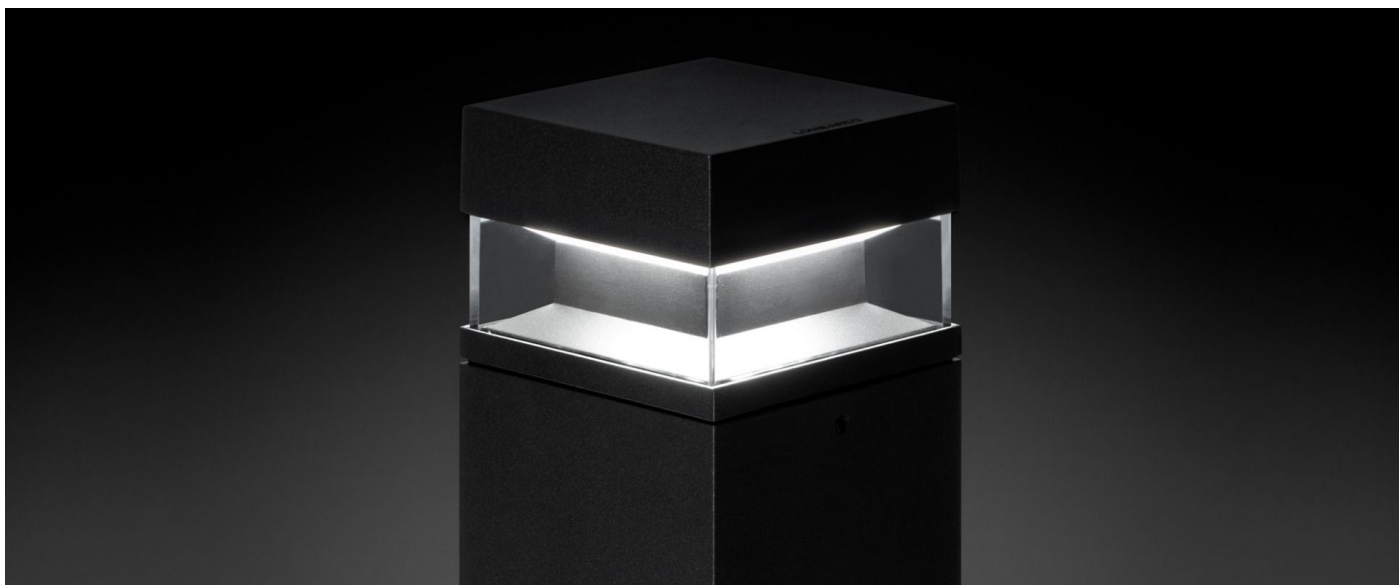
All parts in direct contact with the soil must never be covered by the soil itself or come into contact with aggressive chemicals (e.g. fertilisers, herbicides, pool and/or floor cleaning products, etc.). Clean parts covered with soil build-up or cement dust periodically. Outdoor products must be installed with the appropriate plastic accessories. They must not be installed directly on the ground or directly on concrete because contact between the two materials can create accelerated oxidation of the device.



Tok Q H400

LL12813K3

Lombardo.



Installation images:

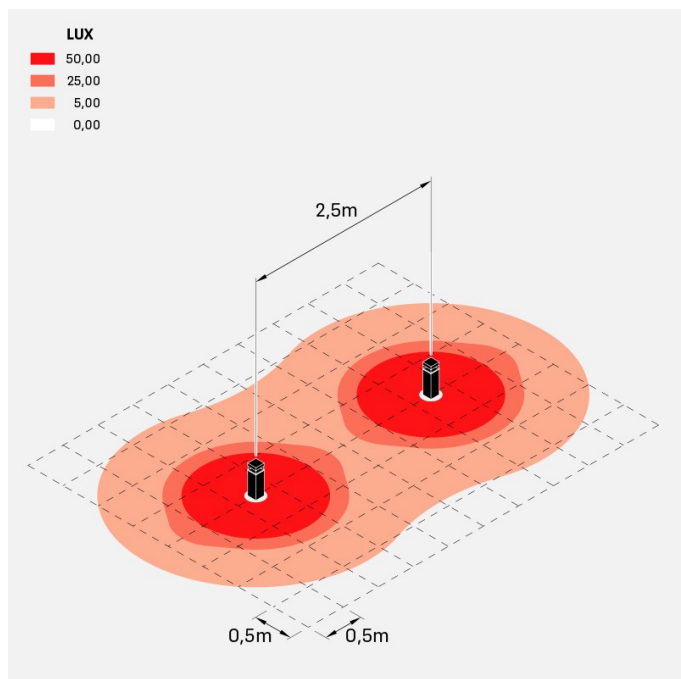


Tok Q H400

LL12813K3

Lombardo.

Lighting simulation:



tok_Q_400