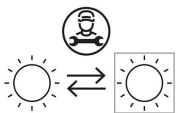


Technical information:

Installation:	Ceiling recess
Material:	Technopolymer
Finish:	Black
Diffuser type:	PMMA
Optics:	28°
Lamp type:	LED
Energy performance class:	G
Colour temperature:	2700K
CRI:	95
LB Factor:	L80B20 - 50.000h
Photobiological risk:	RG1
Power consumption (Watt):	10
Lumen:	1025
Real Lumen:	840
Power supply:	⊗ not included
LED:	700mA - 15V
Insulation class:	⊠ CL.III
Power cable:	0,20 m PVC 2x0,25mm
Type of protection:	IP 65
Resistance to breakage:	IK 06 1J xx3
Standards and Marks of Conformity:	CE UK EA

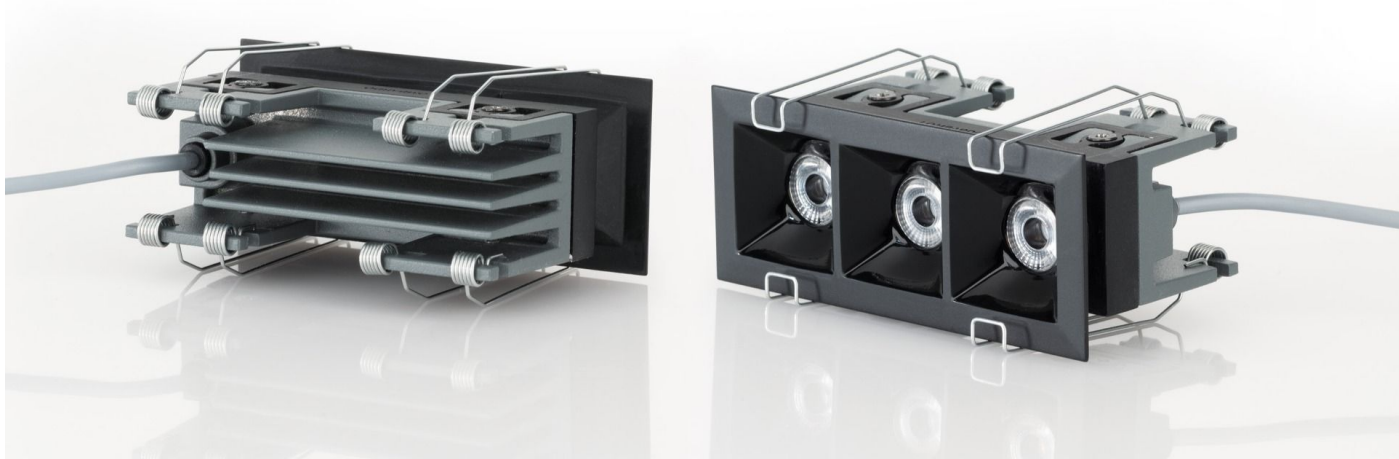
LL codes: external driver IP20



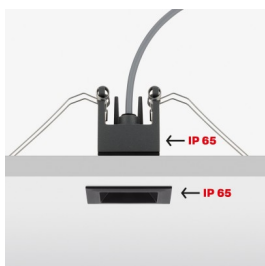
Kura X5

LZ14703BM2

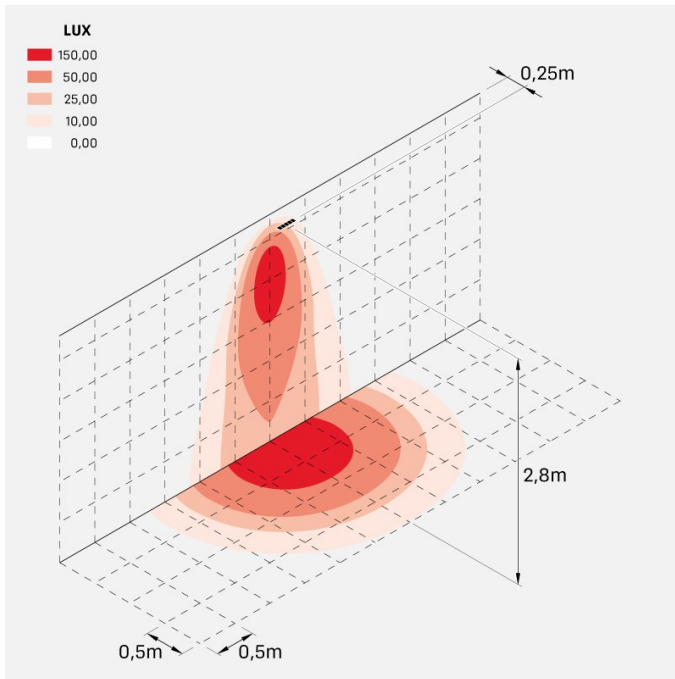
Lombardo.



Installation images:



Lighting simulation:



kura_x5_optic_m

Photometric curves:

