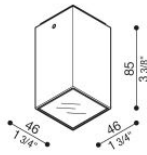


Kura Top X1

LZ14704DM2

Lombardo.



Technical information:

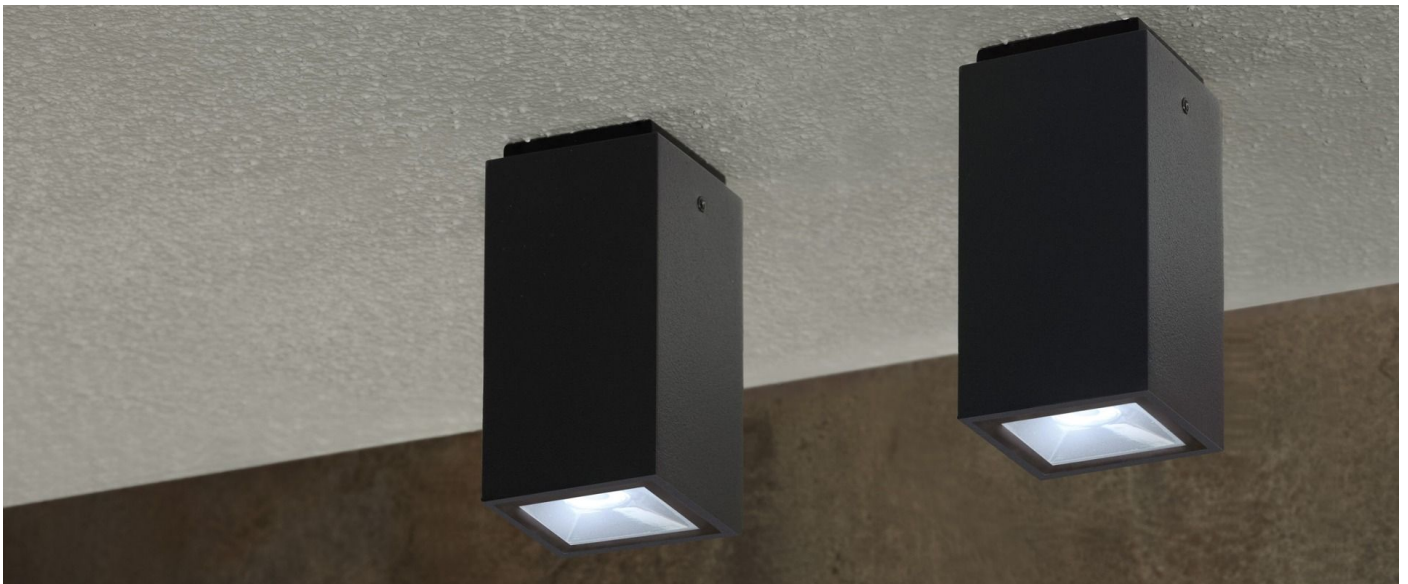
Installation:	Ceiling
Material:	Aluminium
Finish:	Dark Grey RAL 7021
Diffuser type:	Serigraphed glass
Optics:	28°
Lamp type:	LED
Energy performance class:	G
Colour temperature:	2700K
CRI:	95
LB Factor:	L80B20 - 50.000h
Photobiological risk:	RG0
Power consumption (Watt):	2
Lumen:	180
Real Lumen:	140
Power supply:	⊗ not included
LED:	700mA - 3V
Insulation class:	⊓ CL.III
Type of protection:	IP 65
Resistance to breakage:	IK 06 1J xx3
Standards and Marks of Conformity:	CE UK ER



Kura Top X1

LZ14704DM2

Lombardo.

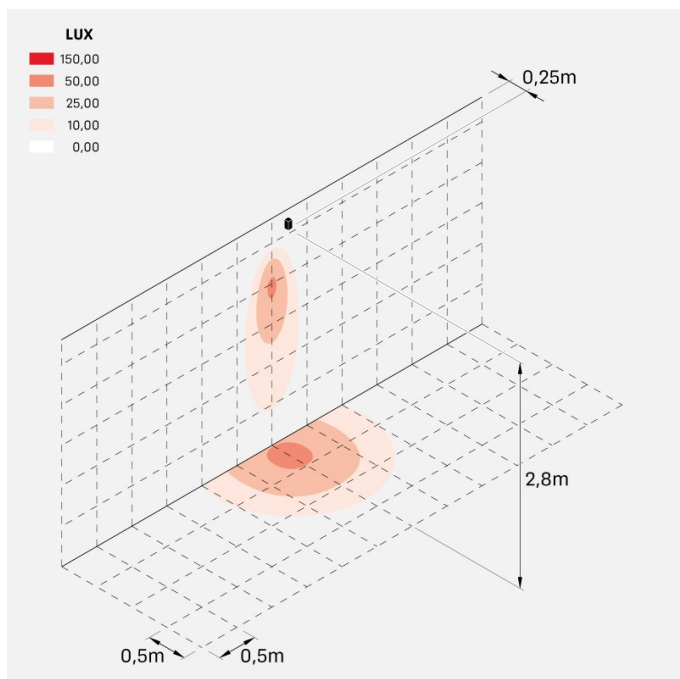


Kura Top X1

LZ14704DM2

Lombardo.

Lighting simulation:



kura_top_x1_optic_m

Photometric curves:

